

“Building Econometric Model for Inflation and Unemployment Rate in ViEt Nam and Myanmar”

Đinh Trần Ngọc Huy

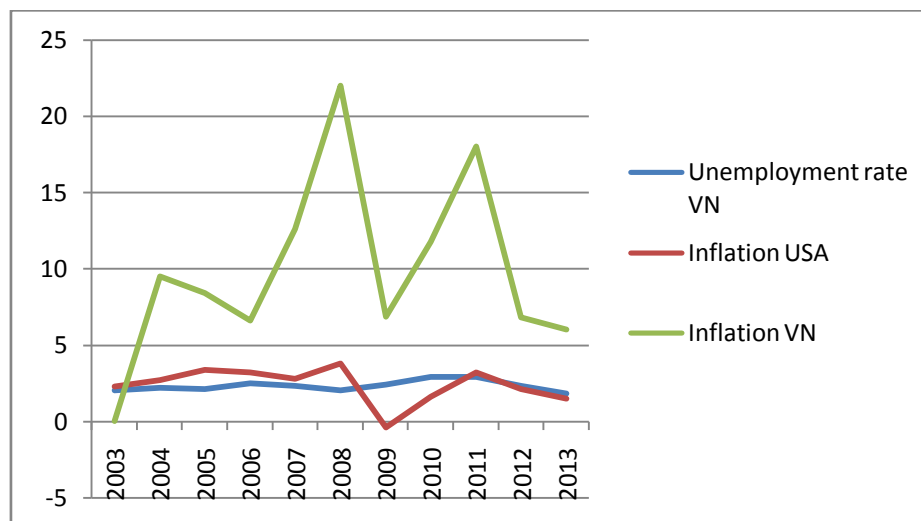
GSIM, International University of Japan, Japan.

**Corresponding author:* Đinh Trần Ngọc Huy, GSIM, International University of Japan, Japan.
Email: dtnhuy2010@gmail.com.

ABSTRACT

After the global economic crisis 2007-2011, Viet Nam and Myanmar economies experienced indirect and direct impacts on their economic, finance and banking system, and especially on unemployment rate. Although some economists have done researches on the relationship among macro economic factors such as: consumer price index (CPI), inflation, GDP....., this paper aims to consider the interaction between macro economic factors such as Viet Nam inflation, US inflation and Viet Nam and Myanmar unemployment rates in the context Viet Nam and Myanmar economics receive impacts from global economic crisis. This is one main objective of this research paper. And the below chart shows us the fluctuation of Viet nam unemployment rate comparing to fluctuations of inflation in the US and in Viet Nam.

Keywords: inflation, unemployment rate



INTRODUCTION

Viet Nam and Myanmar economy have become active and growing recently and they are affected by both internal and external factors such as global economic crisis. Hence, the US economy has certain impacts on both economies. Therefore, unemployment rate in Viet Nam and Myanmar are also affected by external factors such as the recession from US economy, or the USA inflation.

In this research, we will consider unemployment rate in Viet Nam and Myanmar, are affected by two variables (inflation in Myanmar or Viet Nam, and inflation in the USA):

Y (unemployment rate in Viet Nam or Myanmar) = $f(x_1, x_2) = ax_1 + bx_2 + k$

Note : x_1 : inflation in Viet Nam or Myanmar, x_2 : inflation in the USA

In following sections, this paper will present research issues, research methods, research results, discussion and policy suggestion.

RESEARCH ISSUES

Because US economy has impacts on Viet Nam and Myanmar economy, especially during the global economic crisis 2007-2011, this paper will find out:

“Building Econometric Model for Inflation and Unemployment Rate in Việt Nam and Myanmar”

Research issue 1: estimate the relationship between unemployment rate in Viet Nam and inflation in Viet Nam and in USA.

Research issue 2: estimate the relationship between unemployment rate in Myanmar and inflation in Myanmar and in USA.

RESEARCH ON VIET NAM AND MYANMAR UNEMPLOYMENT RATES AND GDP PER CAPITA

The population in Myanmar is 53.3 million people in 2013:

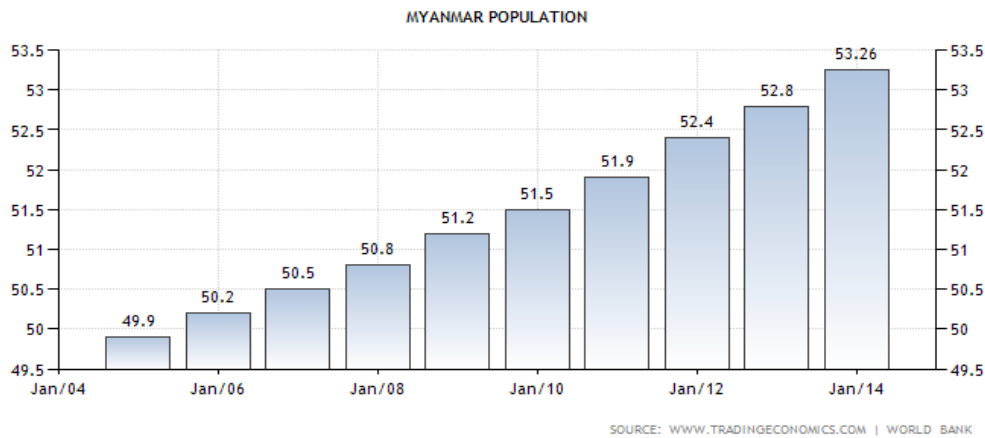


Chart1. Population in Myanmar

While the population in Viet Nam is 89.7 million people in 2013:



Chart2. Population in Viet Nam

GDP per capita in Myanmar until 2011 is 824.19 USD:

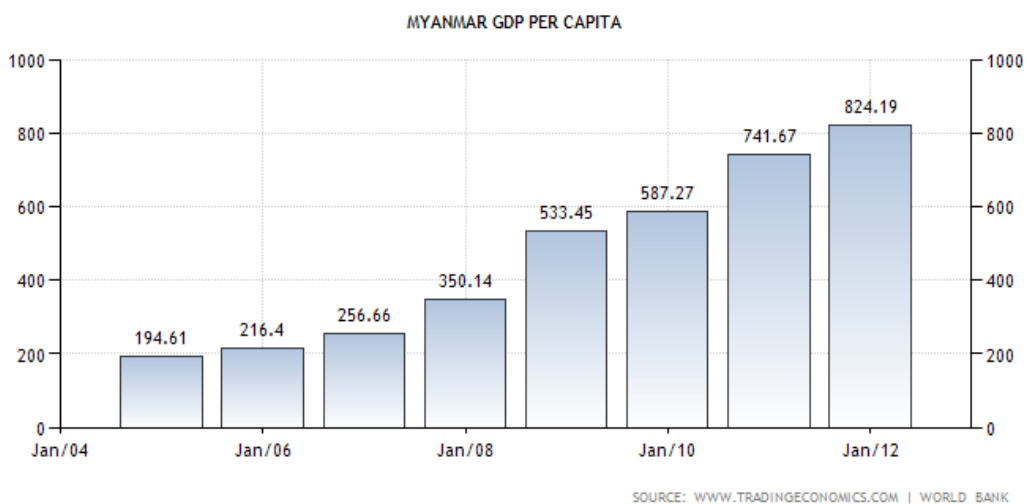


Chart3. GDP per capita in Myanmar

“Building Econometric Model for Inflation and Unemployment Rate in Việt Nam and Myanmar”

GDP per capita in Viet Nam in 2011 is 946.8 USD :



Chart4. GDP per capita in Viet Nam

Comparing to GDP per capita in Singapore is 36102 USD in 2011:

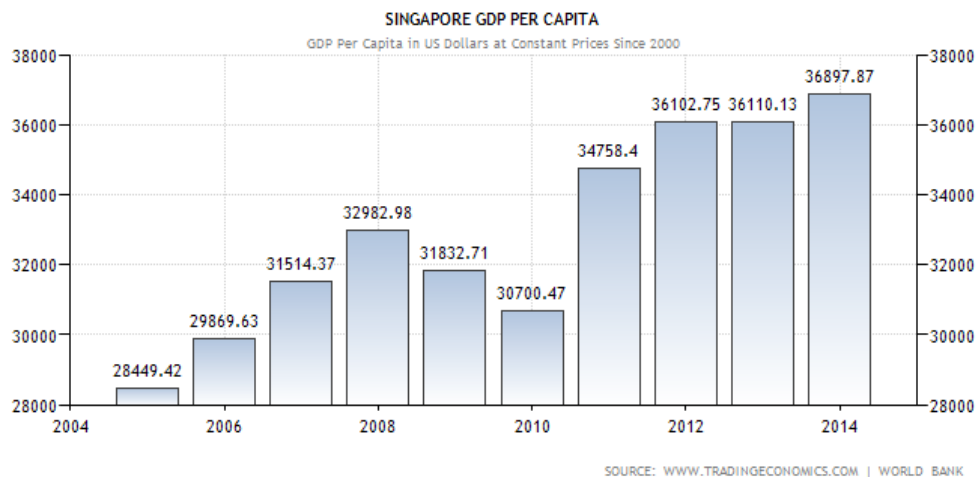


Chart5. GDP per capita in Singapore

Comparing to GDP per capita in Malaysia is 6531 USD in 2011:



Chart6. GDP per capita in Malaysia

We see that both Viet Nam and Myanmar GDP per capita are much lower than GDP per capita in Singapore and Malaysia. In 2013, unemployment rate increases slightly compared

“Building Econometric Model for Inflation and Unemployment Rate in Việt Nam and Myanmar”

to the rate in 2012 (1,9% compared to 1,81%) but Viet Nam is still among the countries with the lowest unemployment rates across the globe.

In Myanmar, unemployment rate in 2013 is 4.02%, increasing slightly from 4% in 2012. (see more in the below chart 9).

CONCEPTUAL THEORIES

The Philips curve shows us the relationship between inflation and unemployment rate. When unemployment is high, wages increases

slowly and inflation decreases. When unemployment is low, wages rose rapidly and inflation increases.

The curve states that inflation and unemployment have a stable and inverse relationship. If economy is growing, inflation increases and more jobs (or less unemployment) are created.

The below chart shows us the Phillips curve during 1961-1969 (source: www.econlib.org)

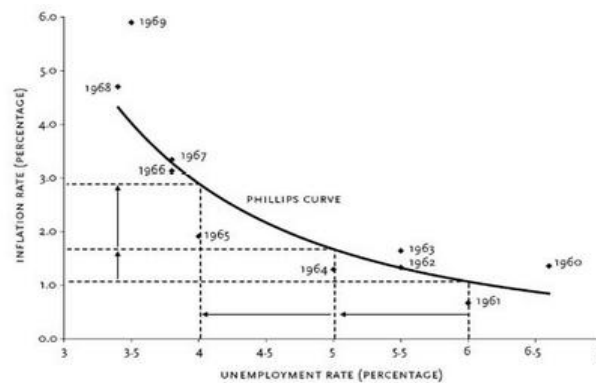


Chart7. Phillips curve

In 1968, Milton Friedman stated that the Phillips curve will be applicable in short run and that in the long run, inflationary policies will not decrease unemployment.

RESEARCH METHOD

In this research, analytical method is used with data from the economy such as inflation and unemployment rate. Beside, econometric method is used with the software E view. It will give us results to suggest policies for businesses and authorities. Econometric model is established as in the introduction part.

Unemployment rate in Viet Nam or Myanmar is a function with 2 variables:

Y (unemployment rate in Viet Nam or Myanmar) = $f(x_1, x_2) = ax_1 + bx_2 + k$

Note : x_1 : inflation in Viet Nam or Myanmar, x_2 : inflation in the USA

PHÂN TÍCH DỮ LIỆU TỔNG QUÁT

The below chart 8 shows us that inflation in VN has a positive correlation with inflation in the US:

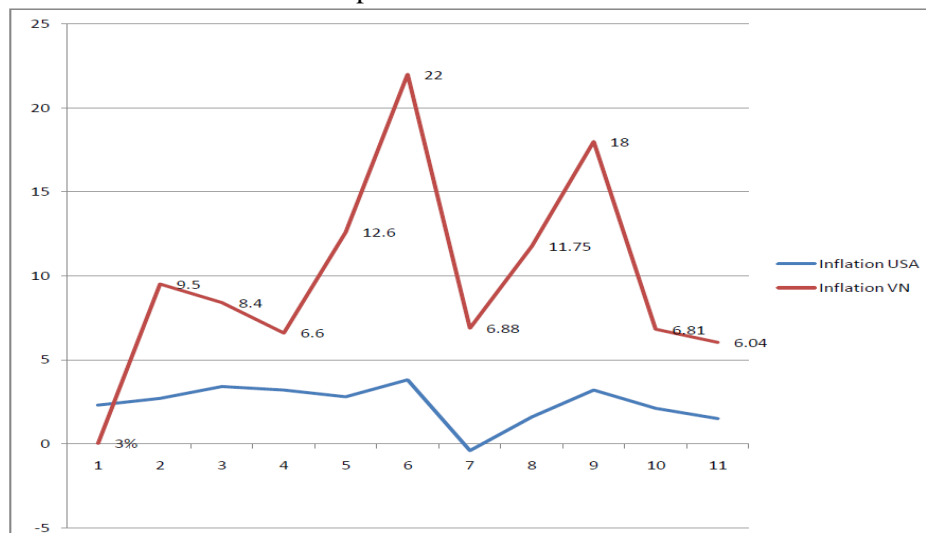


Chart8. Inflation in Viet Nam and in the US (nguồn: Vn economy, trading economic)

“Building Econometric Model for Inflation and Unemployment Rate in Việt Nam and Myanmar”

The below chart 9 shows us that unemployment rate in Myanmar is higher than that in Viet Nam during the period 2003-2013.

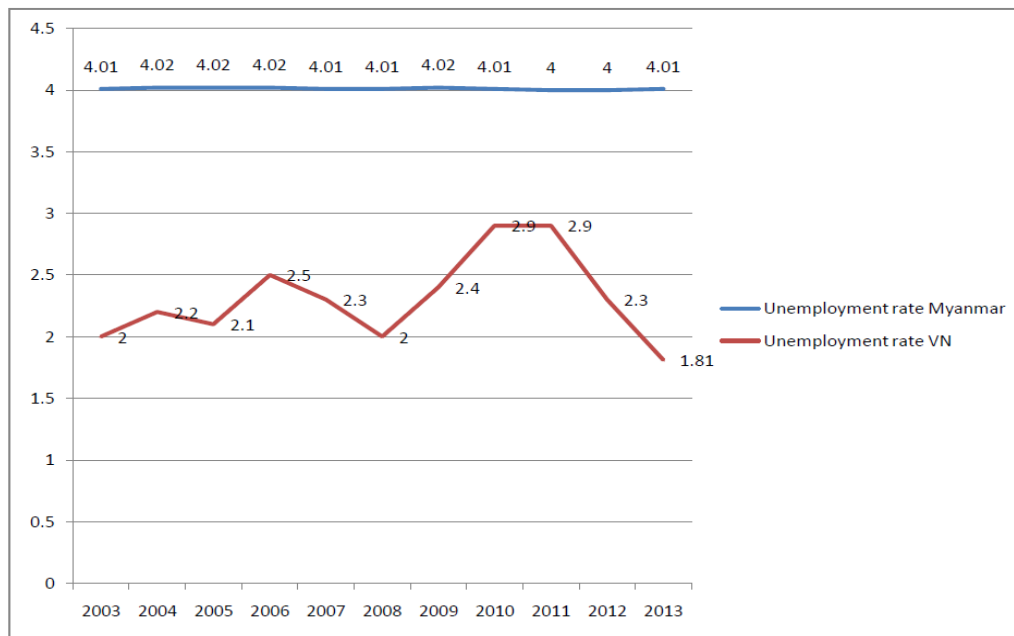


Chart9. Unemployment rates in Viet Nam and in Myanmar (nguồn: Vn economy, trading economic)

And the chart 10 below shows us that unemployment rate in Viet Nam has a positive correlation with inflation in Viet Nam and in the US. From 2003 to 2008, unemployment rate in

Viet Nam is lower than inflation in the US. From 2009 to 2010, unemployment rate in Viet Nam is higher than inflation in the US.

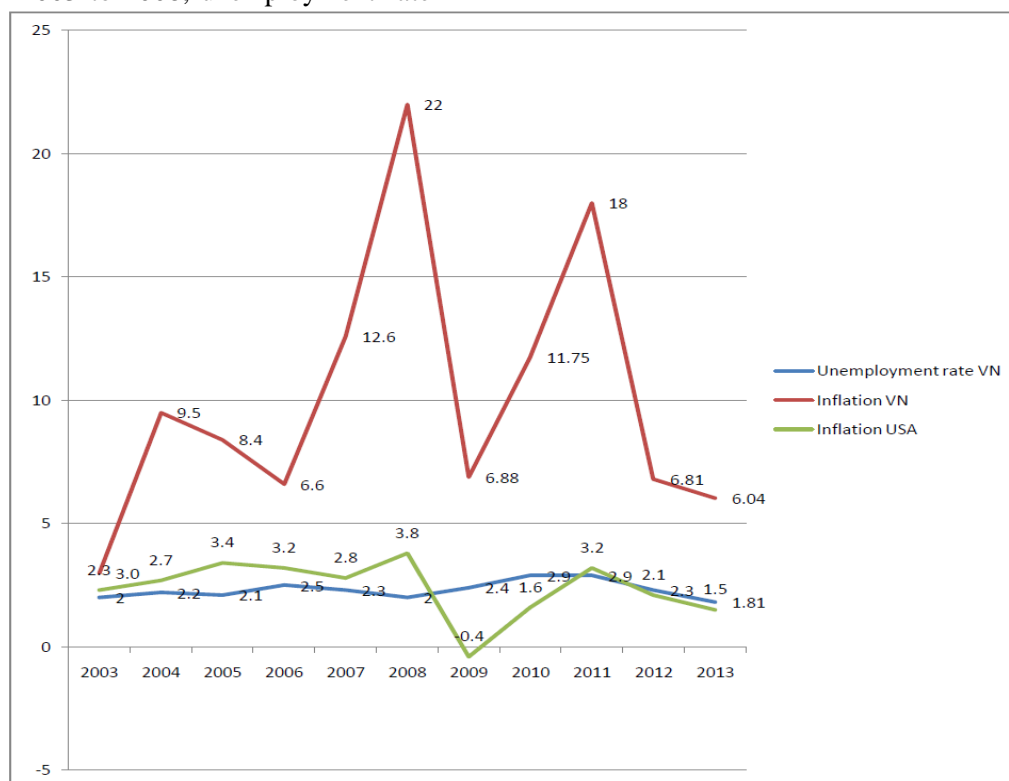


Chart10. Unemployment rate in Viet Nam, inflation in VN and in the US

This research sample uses data (unemployment, inflation) during 11 years from 2003 to 2013. The global crisis starting from 2007 has impacts on Viet Nam and Myanmar economy.

Therefore, we could assume unemployment rate in Viet Nam or Myanmar as a function depending on inflation in the US. Now, we see

“Building Econometric Model for Inflation and Unemployment Rate in Việt Nam and Myanmar”

in the below chart 11, inflation in Myanmar has a positive correlation with inflation in the US. From 2005 to 2009, inflation in Myanmar is higher than (or equal to) that in Viet Nam. But

from 2010 to 2013, inflation in Myanmar is lower than that in Viet Nam. Both inflation in Myanmar and in Viet Nam is higher than that in the US.

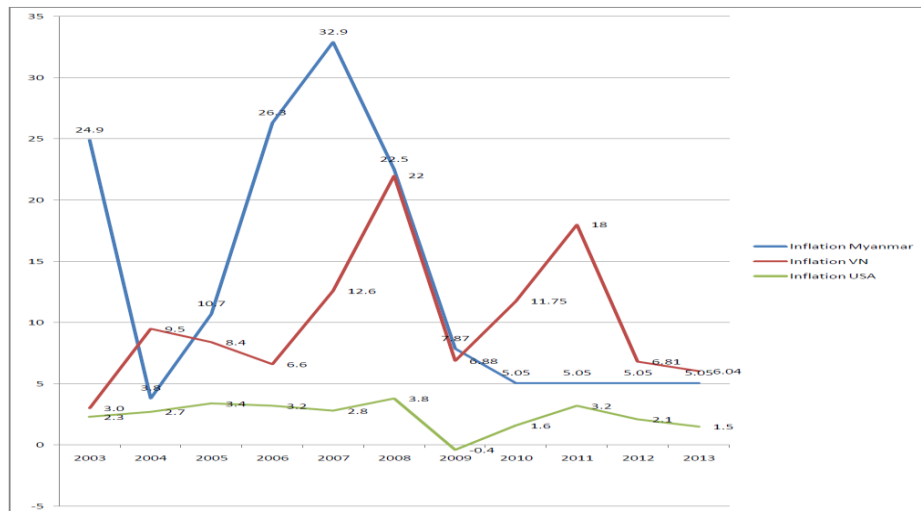


Chart11. Inflation in Myanmar, inflation in VN and in the US

Next we see unemployment rate in Myanmar in the below chart 12. It shows us that, different from Việt Nam, from 2003 to 2013,

unemployment rate in Myanmar is higher than inflation in USA.

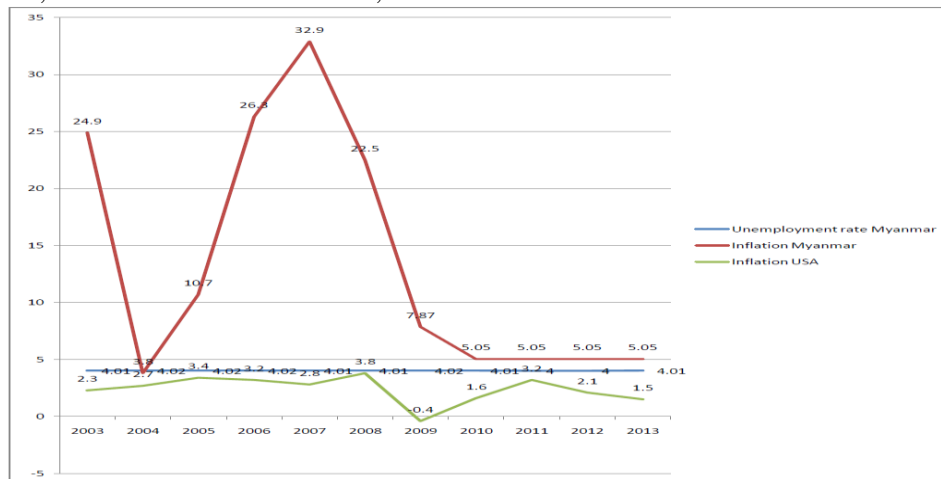


Chart 12. Unemployment rate in Myanmar, inflation in Myanmar and in the US

On the other hand, we could see statistical results with E view in the below table with 3 variables:

Table1. Statistical results for SER03 (inflation in Myanmar), SER02 (inflation in the US) and SER01 (unemployment rate in Myanmar)

	SER03	SER02	SER01
Mean	13.56091	2.381818	4.011818
Median	7.870000	2.700000	4.010000
Maximum	32.90000	3.800000	4.020000
Minimum	3.800000	-0.400000	4.000000
Std. Dev.	10.81830	1.177980	0.007508
Skewness	0.651815	-1.129588	-0.282678
Kurtosis	1.769258	3.823287	1.973465
Jarque-Bera	1.473164	2.649934	0.629475
Probability	0.478747	0.265812	0.729980
Sum	149.1700	26.20000	44.13000
Sum Sq. Dev.	1170.356	13.87636	0.000564
Observations	11	11	11

The above table shows us standard deviation of SER03 (inflation in Myanmar) is the highest

(10.8), Santander deviation of SER02 (inflation in the US) is the second highest (1.18) and

“Building Econometric Model for Inflation and Unemployment Rate in Việt Nam and Myanmar”

standard deviation of unemployment rate in Myanmar is the lowest (0.007). If we want to see correlation matrix of three (3) above

variables, E view generate the below result in table 2:

Table2. Correlation matrix for SER03 (inflation in Myanmar), SER02 (inflation in the US) and SER01 (unemployment rate in Myanmar)

Correlation Matrix			
	SER03	SER02	SER01
SER03	1.000000	0.389730	0.140954
SER02	0.389730	1.000000	-0.131577
SER01	0.140954	-0.131577	1.000000

The above table 2 shows us that correlation between unemployment rate in Myanmar and inflation in Myanmar (0.14) is higher than that between unemployment rate in Myanmar and inflation in the US (-0.13). Unemployment rate in Myanmar has a negative correlation with inflation in the US and it has a positive correlation with inflation in Myanmar..

The below table 3 shows us that correlation between unemployment rate in Viet Nam and inflation in Viet Nam (0.28) is higher than that between unemployment rate in Viet Nam and inflation in the US (-0.07). Unemployment rate in Viet Nam has a negative correlation with inflation in the US and it has a positive correlation with inflation in Viet Nam.

Table3. Correlation matrix for SER04 (inflation in Viet Nam), SER02 (inflation in the US) and SER05 (unemployment rate in Viet Nam)

Correlation Matrix			
	SER04	SER02	SER05
SER04	1.000000	0.488188	0.285421
SER02	0.488188	1.000000	-0.071628
SER05	0.285421	-0.071628	1.000000

REGRESSION ANALYSIS

In this section, we will find out the relationship between macro economic factors such as inflation in Viet Nam or Myanmar, inflation in USA and unemployment rates in Viet Nam or Myanmar.

Viet Nam.

Note: unemployment rate in Viet Nam (SER05), inflation in Viet Nam (SER04), inflation in the US (SER02), inflation in Myanmar (SER03), unemployment rate in Myanmar (SER01)

Scenario 1: regression model with 2 variables : unemployment rate in Viet Nam and inflation in

Using E view give us the below results:

Dependent Variable: SER05
Method: Least Squares
Date: 08/09/14 Time: 11:53
Sample: 2003 2013
Included observations: 11

Variable	Coefficient	Std. Error	t-Statistic	Prob.
SER04	0.017856	0.019986	0.893428	0.3949
C	2.128871	0.229341	9.282562	0.0000
R-squared	0.081465	Mean dependent var		2.310000
Adjusted R-squared	-0.020594	S.D. dependent var		0.351994
S.E. of regression	0.355600	Akaike info criterion		0.932947
Sum squared resid	1.138065	Schwarz criterion		1.005292
Log likelihood	-3.131210	F-statistic		0.798214
Durbin-Watson stat	1.346473	Prob(F-statistic)		0.394890

Therefore, $Unemployment_VN = 0.02 * Inflation_VN + 2.13 (7.1), R^2 = 0.08, SER = 0.4$
(0.02) (0.23)

“Building Econometric Model for Inflation and Unemployment Rate in Việt Nam and Myanmar”

Scenario 2: regression model with 3 variables: unemployment rate in Viet Nam, inflation in Viet Nam and inflation in the US:

Using E view give us the result:

Dependent Variable: SER05
Method: Least Squares
Date: 08/09/14 Time: 11:57
Sample: 2003 2013
Included observations: 11

Variable	Coefficient	Std. Error	t-Statistic	Prob.
SER04	0.026316	0.023505	1.119602	0.2954
SER02	-0.082765	0.112265	-0.737226	0.4820
C	2.240191	0.279657	8.010482	0.0000
R-squared	0.139899	Mean dependent var	2.310000	
Adjusted R-squared	-0.075127	S.D. dependent var	0.351994	
S.E. of regression	0.364977	Akaike info criterion	1.049036	
Sum squared resid	1.065666	Schwarz criterion	1.157553	
Log likelihood	-2.769697	F-statistic	0.650615	
Durbin-Watson stat	1.386882	Prob(F-statistic)	0.547266	

Therefore, $Unemploy_VN = 0.03 * Inflation_VN - 0.08 * InflationUSA + 2.24$ (7.2),
 $R^2 = 0.14$, $SER = 0.36$
(0.02) (0.11) (2.2)

Hence, unemployment rate in Viet Nam has a negative correlation with inflation in the US, but

has a positive correlation with inflation in Viet Nam.

Scenario 3: regression model with 3 variables: unemployment rate in Myanmar, inflation in Myanmar and inflation in the US:

Using E view gives us the result:

Dependent Variable: SER01
Method: Least Squares
Date: 08/09/14 Time: 11:38
Sample: 2003 2013
Included observations: 11

Variable	Coefficient	Std. Error	t-Statistic	Prob.
SER03	0.000157	0.000258	0.609241	0.5593
SER02	-0.001402	0.002371	-0.591104	0.5708
C	4.013023	0.005895	680.7051	0.0000
R-squared	0.060884	Mean dependent var	4.011818	
Adjusted R-squared	-0.173894	S.D. dependent var	0.007508	
S.E. of regression	0.008134	Akaike info criterion	-6.558482	
Sum squared resid	0.000529	Schwarz criterion	-6.449965	
Log likelihood	39.07165	F-statistic	0.259327	
Durbin-Watson stat	1.090240	Prob(F-statistic)	0.777815	

Hence, $Unemployment_rate_Myanmar = -0.001 * InflationUSA + 0.0002 * InflationMyanmar + 4.01$ (7.3),
 $R^2 = 0.06$, $SER = 0.008$
(0.0003) (0.002) (0.006)

We find out unemployment rate in Myanmar has a negative correlation with inflation in USA, but has a positive correlation with inflation in

Myanmar (similar to employment rate in Viet Nam in scenario 2).

LIMITATION OF THE MODEL

E view has advantages such as : analyzing data quickly, and good for econometric and statistics. On the other hand, E view cannot give the absolutely correct correlation between variables

“Building Econometric Model for Inflation and Unemployment Rate in Việt Nam and Myanmar”

in the model. Therefore, in this model, E view can only provide us with results for reference.

DISCUSSION FOR FURTHER RESEARCH

We can add one more factor into our regression model, for example, inflation in the UK. The reason is that both the US and UK economies create the global economic crisis with impacts on worldwide economies including Viet Nam and Myanmar.

CONCLUSION AND POLICY SUGGESTION

Because inflation in Viet Nam (or Myanmar) has a positive correlation with unemployment rates in Viet Nam (or Myanmar), the government and authorities of these countries might consider controlling inflation in order to reduce unemployment rates. Macroeconomic policies need to consider impacts of macro factors such as inflation in their countries and outside factors such as inflation in the US. Because inflation in the US has a negative correlation with unemployment rates in Viet Nam (or Myanmar), the government of Viet Nam and Myanmar need to implement macro policies if inflation in the US decreases (and

therefore, unemployment will increase in Viet Nam or Myanmar).

The government and authorities in Viet Nam and Myanmar can issue policies which can protect their market economy and reduce negative impacts from the global recession.

REFERENCE

- [1] Beeman RE (2009) A Compendium of Financial Crisis Tax Guidance, Bank Accounting & Finance.
- [2] Hall BLiebman J (2000) The Taxation of Executive Compensation. Tax Policy and the Economy 14: 1-44.
- [3] Nehru V (2012) Myanmar’s Economic Policy Priorities., The Carnegie Paper.
- [4] Rieffel L (2012) Myanmar on The Move: An Overview of Recent Developments, Journal of Current Southeast Asian Affairs 4: 31-49.
- [5] Tanaka S., Spohr C., and D’Amico S (2015) Myanmar Human Capital Development, Employment and Labor Markets, ADB Economic Working Paper Series No.469.
- [6] Website <https://tradingeconomics.com/myanmar/unemployment-rate>
- [7] <https://www.ceicdata.com/en/indicator/myanmar/unemployment-rate>

Citation: Đinh Trần Ngọc Huy, “Building Econometric Model for Inflation and Unemployment Rate in Việt Nam and Myanmar”, *International Journal of Research Studies in Science, Engineering and Technology*, vol. 6, no. 4, pp. 06-14, 2019.

Copyright: © 2019 Đinh Trần Ngọc Huy. This is an open-access article distributed under the terms of the Creative Commons Attribution License, which permits unrestricted use, distribution, and reproduction in any medium, provided the original author and source are credited.